

acctim

71412_3 MADERA RADIO CONTROLLED ALARM CLOCK

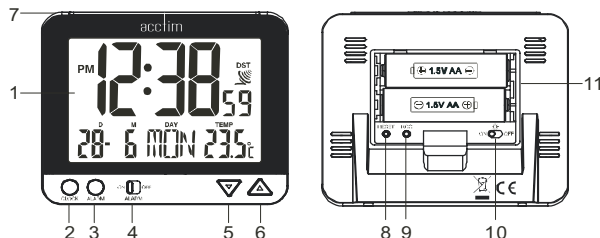
Thank you for your purchase of this quality clock

INTRODUCTION

The Radio Controlled Mechanism fitted to your clock has a built in receiver which is tuned into the National Physical Laboratory MSF transmitter based in Anthorn, Cumbria, UK.

The advantages of using this Technology are:

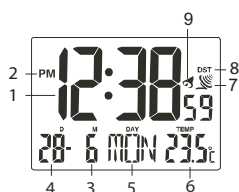
1. Automatically adjusts the clock for Summer/Winter time changes.
2. Automatic precision.
3. Fully Automatic set up - Simply insert batteries.



1. LCD display.
2. CLOCK button.
3. ALARM button.
4. ALARM ON/OFF switch.
5. DOWN button.
6. UP button.
7. SNOOZE/LIGHT button.
8. RESET button.
9. RCC button.
10. NIGHT LIGHT ON/OFF switch.
11. Battery compartment.

LCD display symbols

1. Time
2. AM/PM
3. Month
4. Date /Alarm time
5. Day of the week/
Language for day of the week
6. Temperature
7. Radio signal icon
8. Daylight saving time icon
9. Alarm icon



GB

TO START THE CLOCK

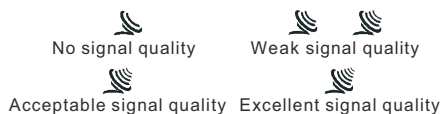
Open the battery compartment cover and insert 2XAA batteries observing the indicated polarity symbols. The clock will automatically start searching for the time signal in 8 seconds and the Radio signal icon will start to flash.

Note. If no display appears on the LCD after inserting the batteries, press the RESET button to reset the clock. To do this - push a pin through the RESET hole.

If the clock receives the time signal it will set automatically within 5-8 minutes and the Radio signal icon will remain on the display.

RADIO SIGNAL ICON

The radio signal icon displays signal strength in 4 levels. Wave segment flashing means the time signal are being received. The signal quality could be classified into four types:



If the clock does not receive the time signal it can be set manually.

MANUAL TIME AND CALENDAR SET

Press and hold the CLOCK button for 2 seconds and the Year will start to flash.
Press the UP & DOWN button to set the year.
Press the CLOCK button once again and the month will start to flash.
Press the UP & DOWN button to set the month.
Press the CLOCK button once again and the date will start to flash.
Press the UP & DOWN button to set the date.
Press the CLOCK button once again and the 12/24 hour will start to flash.
Press the UP & DOWN button to select between 12/24 hour format.
Press the CLOCK button once again and the hour will start to flash.
Press the UP & DOWN button to set the hour.
Press the CLOCK button once again and the minute will start to flash.
Press the UP & DOWN button to set the minute.
Press the CLOCK button once again and the second will start to flash.
Press the UP & DOWN button to set the second.
Press the CLOCK button once again and the language for day of the week will start to flash.
Press the UP & DOWN button to select the language for day of the week.
Languages available English (GB), French (FR), German (DE), Spanish (ES) and Italian (IT).
Press the CLOCK button once again to complete, or let it exit automatically 30 seconds later without pressing any key.

ALARM TIME SETTING

Press and hold the ALARM button for 2 seconds and hour digit will start to flash.
Press the UP & DOWN button to set the desired alarm hour.
Press the ALARM button once again and minute will start to flash.
Press the UP & DOWN button to set the desired alarm minute.
Press the ALARM button once again to complete, or let it exit automatically 30 seconds later without pressing any key.

NOTE. In normal time mode, press the ALARM button to display the alarm time for 5 seconds.

TURN ON/OFF THE ALARM

Slide the ALARM ON/OFF switch to ON or OFF position, the alarm icon will display when alarm is turned on.

SNOOZE/LIGHT

Press to light the display for a few seconds. Press to activate snooze during alarm, after which the alarm will sound again approximately 5 minutes later.

NIGHT LIGHT

To turn ON the night light, slide the NIGHT LIGHT ON/OFF switch to ON position. The display will stay lit in a dark environment until you slide the NIGHT LIGHT ON/OFF switch to OFF position.

TEMPERATURE FUNCTION

Press the RCC button once to select between Celsius and Fahrenheit.

DAYLIGHT SAVING TIME (DST)

As your clock is Radio Controlled, it will automatically adjust to the Summer/Winter time changes. Summer time starts on the last Sunday in March and ends on the last Sunday in October. The daylight saving time icon (DST) will automatically appear on the display to indicate Summer time.

MSF RECEPTION DIFFICULTIES

Like any receiver your clock needs a good signal to work properly. The main causes of reception failure are...

Atmospheric and local interferences.

Interference from electrical equipment e.g. TV, computers or radios.

Location of the clocks internal receiver within the building.

Reduced local signal due to steel framed structure.

Outside the normal transmission.

The following suggestion may help improve reception of the MSF signal:

Check that the battery/ies are new and in good condition.

Check that the battery/ies are inserted correctly.

Try rotating the clock as the internal receiver that picks up the signal is most effective when it is facing directly towards or away from Anthorn.

Try moving your clock to a new location away from any electrical equipment e.g. TV, computer or radios, and start the set up again or remove the battery/ies and insert again after 5.30pm. Due to local interference the signal is stronger between midnight & 5am.

Note: After the first time signal is received, the clock will automatically search for the time signal at 2.00am, 8.00am, 2.00pm & 8.00pm each day, if the signal is weak and your clock does not set, move your clock to a new location, press and hold the RCC button for 3 seconds to start the radio controlled signal search.

Interruption to the MSF signal

The Anthorn transmitter is periodically shut down for scheduled maintenance resulting in no signal being transmitted. For dates of the schedule maintenance visit www.npl.co.uk/server.php?show=ConWebDoc.1001 or call the NPL MSF recorded message on (0)20 8943 6493

MAINTENANCE

Replace the battery/ies annually even if the product is still running.

Remove the battery/ies if the clock is stored or not in use.

A soft cloth may be used to clean your clock.

Do not use any corrosive cleaners or chemical solutions on the clock.

YOUR GUARANTEE

Your clock is guaranteed for 12 months from the date of purchase against any faults arising from defective materials or manufacture. Damage caused through careless handling, misuse or in transit is expressly excluded. Should this clock fail within 12 months please return it in the first instance to your retailer.

If you have any queries, problems or do not understand any part of these instructions please contact:

Customer Help Line (01908) 449208 or Local 0845 1207208
Mon - Fri 9.00am - 4.30pm
email for service: service@acctim.com or visit www.acctim.com

Environmental Protection**Disposal of electrical & electronic equipment**

Do not dispose of this product with household waste. For the proper treatment, recovery and recycling please take this product to the appropriate collection point. If you are unsure of where this is contact your local authority. Improper disposal may be harmful to the environment.

